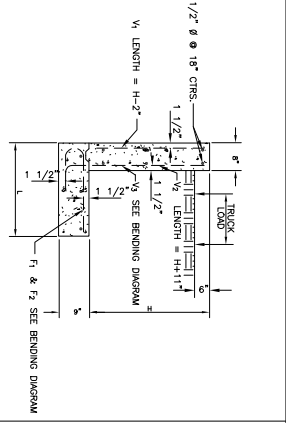
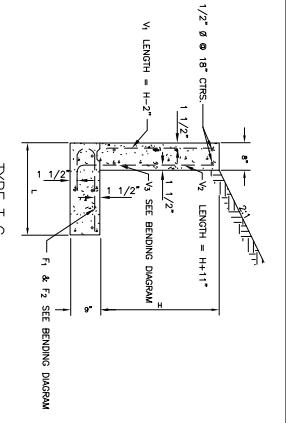


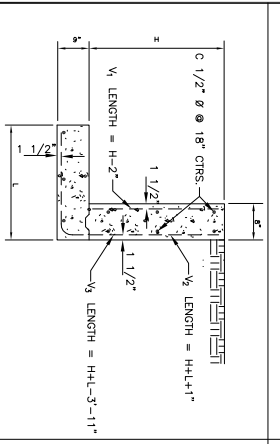
REGION NO.	H	L	F BAR	C BAR	V1 BAR	V2 BAR	V3 BAR	QUANTITIES
1	2'-0"	2'-0"	1/2" @ 18"	1/2" @ 18"	1/2" @ 18"	1/2" @ 18"	1/2" @ 18"	8.28 0.103
2	2'-0"	2'-0"	1/2" @ 18"	1/2" @ 18"	1/2" @ 18"	1/2" @ 18"	11.11 0.146	
3	4'-0"	3'-11"	1/2" @ 18"	1/2" @ 18"	1/2" @ 18"	1/2" @ 18"	13.24 0.183	
4	4'-0"	3'-11"	1/2" @ 18"	1/2" @ 18"	1/2" @ 18"	1/2" @ 18"	14.29 0.203	
5	6'-0"	5'-11"	1/2" @ 18"	1/2" @ 18"	1/2" @ 18"	1/2" @ 18"	22.00 0.278	
6	6'-0"	5'-11"	1/2" @ 18"	1/2" @ 18"	1/2" @ 18"	1/2" @ 18"	22.80 0.289	
7	7'-0"	6'-5"	1/2" @ 18"	1/2" @ 18"	1/2" @ 18"	1/2" @ 18"	42.67 0.531	
8	7'-0"	6'-5"	1/2" @ 18"	1/2" @ 18"	1/2" @ 18"	1/2" @ 18"	43.07 0.534	
9	8'-0"	7'-10"	1/2" @ 18"	1/2" @ 18"	1/2" @ 18"	1/2" @ 18"	52.71 0.675	



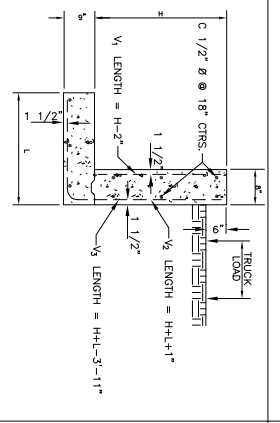
REGION NO.	H	L	F BAR	C BAR	V1 BAR	V2 BAR	V3 BAR	QUANTITIES
1	2'-0"	2'-0"	1/2" @ 18"	1/2" @ 18"	1/2" @ 18"	1/2" @ 18"	1/2" @ 18"	8.28 0.103
2	2'-0"	2'-0"	1/2" @ 18"	1/2" @ 18"	1/2" @ 18"	1/2" @ 18"	11.10 0.144	
3	4'-0"	3'-7"	1/2" @ 18"	1/2" @ 18"	1/2" @ 18"	1/2" @ 18"	13.60 0.184	
4	4'-0"	3'-7"	1/2" @ 18"	1/2" @ 18"	1/2" @ 18"	1/2" @ 18"	14.60 0.204	
5	6'-0"	5'-7"	1/2" @ 18"	1/2" @ 18"	1/2" @ 18"	1/2" @ 18"	24.44 0.289	
6	6'-0"	5'-7"	1/2" @ 18"	1/2" @ 18"	1/2" @ 18"	1/2" @ 18"	24.84 0.292	
7	7'-0"	6'-7"	1/2" @ 18"	1/2" @ 18"	1/2" @ 18"	1/2" @ 18"	45.79 0.538	
8	7'-0"	6'-7"	1/2" @ 18"	1/2" @ 18"	1/2" @ 18"	1/2" @ 18"	46.19 0.541	



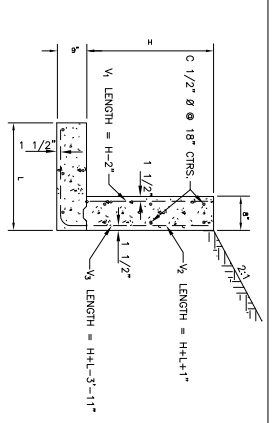
REGION NO.	H	L	F BAR	C BAR	V1 BAR	V2 BAR	V3 BAR	QUANTITIES
1	2'-0"	2'-0"	1/2" @ 18"	1/2" @ 18"	1/2" @ 18"	1/2" @ 18"	1/2" @ 18"	8.28 0.103
2	2'-0"	2'-0"	1/2" @ 18"	1/2" @ 18"	1/2" @ 18"	1/2" @ 18"	11.11 0.146	
3	4'-0"	3'-4"	1/2" @ 18"	1/2" @ 18"	1/2" @ 18"	1/2" @ 18"	13.40 0.181	
4	4'-0"	3'-4"	1/2" @ 18"	1/2" @ 18"	1/2" @ 18"	1/2" @ 18"	14.40 0.201	
5	6'-0"	5'-4"	1/2" @ 18"	1/2" @ 18"	1/2" @ 18"	1/2" @ 18"	24.24 0.286	
6	6'-0"	5'-4"	1/2" @ 18"	1/2" @ 18"	1/2" @ 18"	1/2" @ 18"	24.64 0.289	
7	7'-0"	6'-4"	1/2" @ 18"	1/2" @ 18"	1/2" @ 18"	1/2" @ 18"	45.59 0.537	
8	7'-0"	6'-4"	1/2" @ 18"	1/2" @ 18"	1/2" @ 18"	1/2" @ 18"	45.99 0.540	



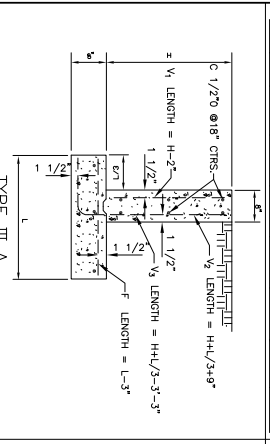
REGION NO.	H	L	F BAR	C BAR	V1 BAR	V2 BAR	V3 BAR	QUANTITIES
1	2'-0"	2'-0"	1/2" @ 18"	1/2" @ 18"	1/2" @ 18"	1/2" @ 18"	1/2" @ 18"	8.28 0.103
2	2'-0"	2'-0"	1/2" @ 18"	1/2" @ 18"	1/2" @ 18"	1/2" @ 18"	11.06 0.145	
3	4'-0"	3'-11"	1/2" @ 18"	1/2" @ 18"	1/2" @ 18"	1/2" @ 18"	13.16 0.180	
4	4'-0"	3'-11"	1/2" @ 18"	1/2" @ 18"	1/2" @ 18"	1/2" @ 18"	14.16 0.190	
5	6'-0"	5'-11"	1/2" @ 18"	1/2" @ 18"	1/2" @ 18"	1/2" @ 18"	21.86 0.281	
6	6'-0"	5'-11"	1/2" @ 18"	1/2" @ 18"	1/2" @ 18"	1/2" @ 18"	22.26 0.284	
7	7'-0"	6'-5"	1/2" @ 18"	1/2" @ 18"	1/2" @ 18"	1/2" @ 18"	41.90 0.514	
8	7'-0"	6'-5"	1/2" @ 18"	1/2" @ 18"	1/2" @ 18"	1/2" @ 18"	42.30 0.517	



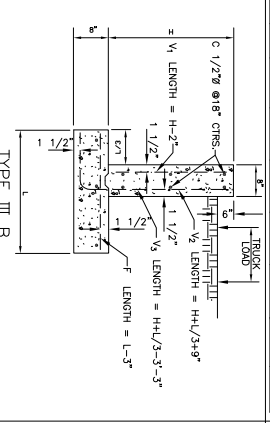
REGION NO.	H	L	F BAR	C BAR	V1 BAR	V2 BAR	V3 BAR	QUANTITIES
1	2'-0"	2'-0"	1/2" @ 18"	1/2" @ 18"	1/2" @ 18"	1/2" @ 18"	1/2" @ 18"	8.28 0.103
2	2'-0"	2'-0"	1/2" @ 18"	1/2" @ 18"	1/2" @ 18"	1/2" @ 18"	11.00 0.144	
3	4'-0"	3'-7"	1/2" @ 18"	1/2" @ 18"	1/2" @ 18"	1/2" @ 18"	13.50 0.184	
4	4'-0"	3'-7"	1/2" @ 18"	1/2" @ 18"	1/2" @ 18"	1/2" @ 18"	14.50 0.204	
5	6'-0"	5'-7"	1/2" @ 18"	1/2" @ 18"	1/2" @ 18"	1/2" @ 18"	24.26 0.286	
6	6'-0"	5'-7"	1/2" @ 18"	1/2" @ 18"	1/2" @ 18"	1/2" @ 18"	24.66 0.289	
7	7'-0"	6'-7"	1/2" @ 18"	1/2" @ 18"	1/2" @ 18"	1/2" @ 18"	45.71 0.537	
8	7'-0"	6'-7"	1/2" @ 18"	1/2" @ 18"	1/2" @ 18"	1/2" @ 18"	46.11 0.540	



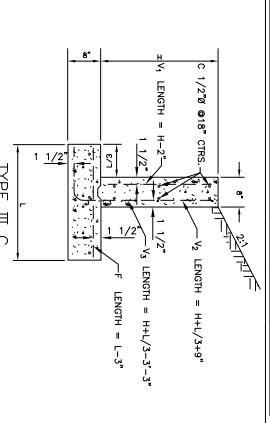
REGION NO.	H	L	F BAR	C BAR	V1 BAR	V2 BAR	V3 BAR	QUANTITIES
1	2'-0"	2'-0"	1/2" @ 18"	1/2" @ 18"	1/2" @ 18"	1/2" @ 18"	1/2" @ 18"	8.28 0.103
2	2'-0"	2'-0"	1/2" @ 18"	1/2" @ 18"	1/2" @ 18"	1/2" @ 18"	11.00 0.144	
3	4'-0"	3'-4"	1/2" @ 18"	1/2" @ 18"	1/2" @ 18"	1/2" @ 18"	13.30 0.179	
4	4'-0"	3'-4"	1/2" @ 18"	1/2" @ 18"	1/2" @ 18"	1/2" @ 18"	14.30 0.199	
5	6'-0"	5'-4"	1/2" @ 18"	1/2" @ 18"	1/2" @ 18"	1/2" @ 18"	24.14 0.285	
6	6'-0"	5'-4"	1/2" @ 18"	1/2" @ 18"	1/2" @ 18"	1/2" @ 18"	24.54 0.288	
7	7'-0"	6'-4"	1/2" @ 18"	1/2" @ 18"	1/2" @ 18"	1/2" @ 18"	45.49 0.536	
8	7'-0"	6'-4"	1/2" @ 18"	1/2" @ 18"	1/2" @ 18"	1/2" @ 18"	45.89 0.539	



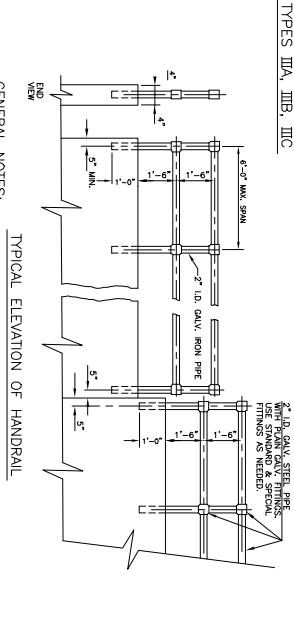
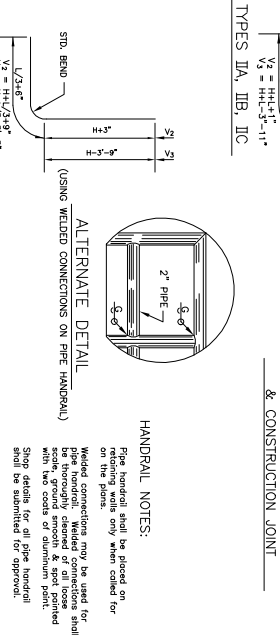
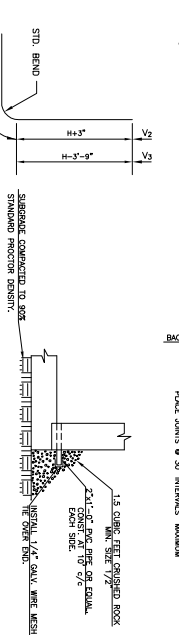
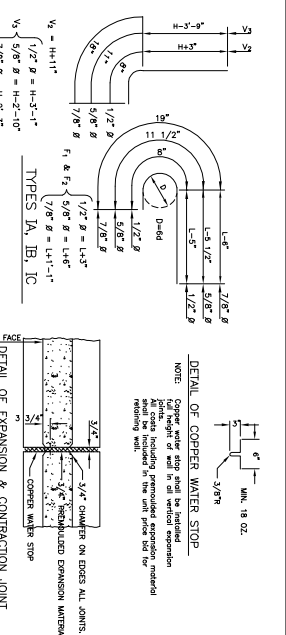
REGION NO.	H	L	F BAR	C BAR	V1 BAR	V2 BAR	V3 BAR	QUANTITIES
1	2'-0"	2'-0"	1/2" @ 18"	1/2" @ 18"	1/2" @ 18"	1/2" @ 18"	1/2" @ 18"	8.28 0.103
2	2'-0"	2'-0"	1/2" @ 18"	1/2" @ 18"	1/2" @ 18"	1/2" @ 18"	11.00 0.144	
3	4'-0"	3'-7"	1/2" @ 18"	1/2" @ 18"	1/2" @ 18"	1/2" @ 18"	13.50 0.184	
4	4'-0"	3'-7"	1/2" @ 18"	1/2" @ 18"	1/2" @ 18"	1/2" @ 18"	14.50 0.204	
5	6'-0"	5'-7"	1/2" @ 18"	1/2" @ 18"	1/2" @ 18"	1/2" @ 18"	24.26 0.286	
6	6'-0"	5'-7"	1/2" @ 18"	1/2" @ 18"	1/2" @ 18"	1/2" @ 18"	24.66 0.289	
7	7'-0"	6'-7"	1/2" @ 18"	1/2" @ 18"	1/2" @ 18"	1/2" @ 18"	45.71 0.537	
8	7'-0"	6'-7"	1/2" @ 18"	1/2" @ 18"	1/2" @ 18"	1/2" @ 18"	46.11 0.540	



REGION NO.	H	L	F BAR	C BAR	V1 BAR	V2 BAR	V3 BAR	QUANTITIES
1	2'-0"	2'-0"	1/2" @ 18"	1/2" @ 18"	1/2" @ 18"	1/2" @ 18"	1/2" @ 18"	8.28 0.103
2	2'-0"	2'-0"	1/2" @ 18"	1/2" @ 18"	1/2" @ 18"	1/2" @ 18"	10.99 0.143	
3	4'-0"	3'-5"	1/2" @ 18"	1/2" @ 18"	1/2" @ 18"	1/2" @ 18"	13.49 0.183	
4	4'-0"	3'-5"	1/2" @ 18"	1/2" @ 18"	1/2" @ 18"	1/2" @ 18"	14.49 0.203	
5	6'-0"	5'-5"	1/2" @ 18"	1/2" @ 18"	1/2" @ 18"	1/2" @ 18"	24.21 0.285	
6	6'-0"	5'-5"	1/2" @ 18"	1/2" @ 18"	1/2" @ 18"	1/2" @ 18"	24.61 0.288	
7	7'-0"	6'-5"	1/2" @ 18"	1/2" @ 18"	1/2" @ 18"	1/2" @ 18"	45.66 0.536	
8	7'-0"	6'-5"	1/2" @ 18"	1/2" @ 18"	1/2" @ 18"	1/2" @ 18"	46.06 0.539	



REGION NO.	H	L	F BAR	C BAR	V1 BAR	V2 BAR	V3 BAR	QUANTITIES
1	2'-0"	2'-0"	1/2" @ 18"	1/2" @ 18"	1/2" @ 18"	1/2" @ 18"	1/2" @ 18"	8.28 0.103
2	2'-0"	2'-0"	1/2" @ 18"	1/2" @ 18"	1/2" @ 18"	1/2" @ 18"	10.99 0.143	
3	4'-0"	3'-2"	1/2" @ 18"	1/2" @ 18"	1/2" @ 18"	1/2" @ 18"	13.49 0.183	
4	4'-0"	3'-2"	1/2" @ 18"	1/2" @ 18"	1/2" @ 18"	1/2" @ 18"	14.49 0.203	
5	6'-0"	5'-2"	1/2" @ 18"	1/2" @ 18"	1/2" @ 18"	1/2" @ 18"	24.21 0.285	
6	6'-0"	5'-2"	1/2" @ 18"	1/2" @ 18"	1/2" @ 18"	1/2" @ 18"	24.61 0.288	
7	7'-0"	6'-2"	1/2" @ 18"	1/2" @ 18"	1/2" @ 18"	1/2" @ 18"	45.66 0.536	
8	7'-0"	6'-2"	1/2" @ 18"	1/2" @ 18"	1/2" @ 18"	1/2" @ 18"	46.06 0.539	



GENERAL NOTES:
 All construction and material shall be in accordance with the City of Chickasha Standard Specifications.
 All exposed concrete edges shall have a 3/4" chamfer.
 All concrete shall be class "X" Concrete, 3000 PSI.
 Expansion joints shall be placed at a maximum of 30'-0" intervals.
 All reinforcing steel bars shall be deformed bars, cold bent, no welds permitted.
 All exposed concrete surfaces shall have a compound finish.
 This detail adapted from O.D.O.T. retaining wall RW-1.

CITY OF CHICKASHA
 COMMUNITY PLANNING & DEVELOPMENT

RETAINING WALLS

APPROVED BY: _____ DATE: _____
 DRAWN BY: _____ DATE: _____
 DWG. NO. D-504