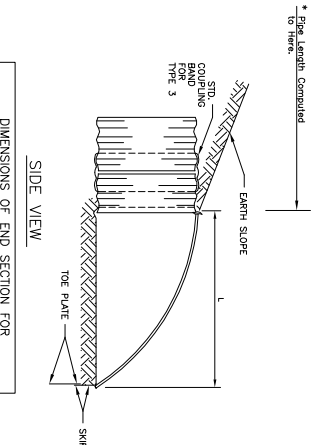
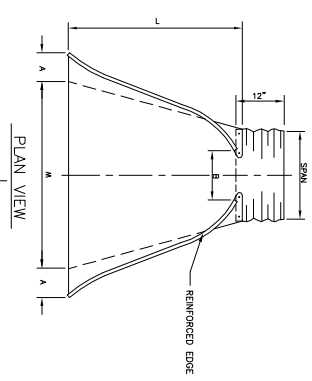


\* Pipe Length Computed to Here  
to Here

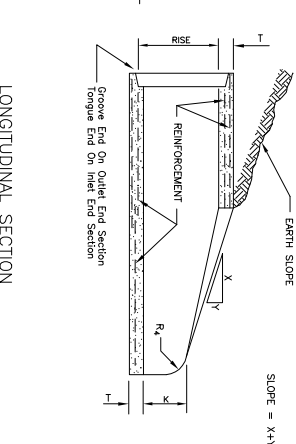
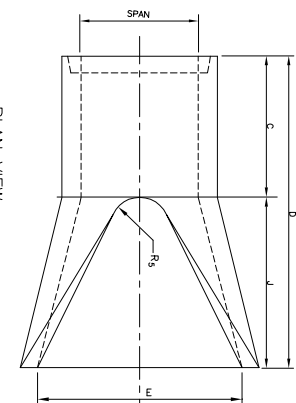


DIMENSIONS OF END SECTION FOR ROUND METAL PIPE

DN	CA	A ± 1	B	H ± 1	L ± 1/2	W ± 2	APPROX. SLOPE	APPROX. BODY
18	18	6	10	6	31	36	2 1/2 : 1	1
24	24	10	13	6	41	48	2 1/2 : 1	1
30	30	12	16	6	51	60	2 1/2 : 1	1
36	36	14	19	6	60	72	2 1/2 : 1	2
42	42	16	22	11	69	84	2 1/2 : 1	2
48	48	18	27	12	78	90	2 1/2 : 1	2

NOTE: When pre-fabricated End Sections are optional, they should be of the same material as that of the pipe on which they are installed.

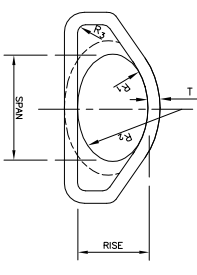
Any Structural Excavation required for installation of Pre-fabricated End Sections shall be included in the Price Bid for other items of work.



DIMENSIONS OF PRECAST END SECTION FOR ROUND PIPES

DN	K	J	C	D	E	T	R <sub>1</sub>	R <sub>2</sub>	R <sub>3</sub>	R <sub>4</sub>	R <sub>5</sub>	SLOPE
18	9	27	46	73	46	3	3	3	3	3	3	3:10:1
24	12	34	56	93	56	3	3	3	3	3	3	3:10:1
30	15	41	66	111	66	3	3	3	3	3	3	3:10:1
36	18	48	76	129	76	3	3	3	3	3	3	3:10:1
42	21	55	86	147	86	3	3	3	3	3	3	3:10:1
48	24	62	96	165	96	3	3	3	3	3	3	3:10:1

ROUND CONC. PIPE END SECTION



ELLIPTICAL CONC. PIPE END SECTION

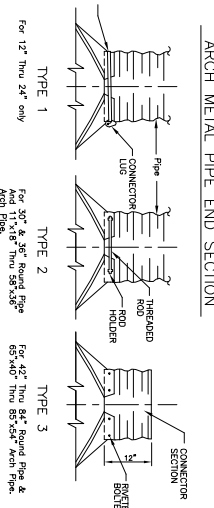
DIMENSIONS OF PRECAST END SECTION FOR ELLIPTICAL PIPES

SPAN	RISE	R <sub>1</sub>	R <sub>2</sub>	R <sub>3</sub>	R <sub>4</sub>	R <sub>5</sub>	T	K	J	C	D	E	SLOPE
23	14	6	20	3	3	3	2 1/2	8	27	42	72	36	3:10:1
30	17	6 1/2	26 1/2	3	3	3	3 1/4	8 1/2	34	52	84	42	3:10:1
36	20	7	33	3	3	3	4	9	37	62	96	50	3:10:1
42	24	8 1/2	40 1/2	3	3	3	4 3/4	9 3/4	41	72	114	60	3:10:1
48	27	11 1/4	50 1/4	3	3	3	5 1/2	10 1/2	47	84	132	70	3:10:1
54	30	14 1/4	60 1/4	3	3	3	6 1/2	11 1/2	53	96	150	80	3:10:1
60	33	17 1/4	70 1/4	3	3	3	7 1/2	12 1/2	60	108	168	90	3:10:1
66	36	20 1/4	80 1/4	3	3	3	8 1/2	13 1/2	67	120	186	100	3:10:1
72	40	24 1/4	90 1/4	3	3	3	9 1/2	14 1/2	75	132	204	110	3:10:1

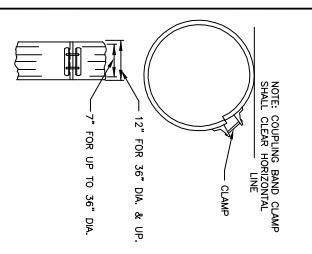
DIMENSIONS OF END SECTION FOR METAL PIPE ARCH

SPAN	RISE	CA	A ± 1	B	H ± 1	L ± 1/2	W ± 2	APPROX. SLOPE	APPROX. BODY
22	13	16	7	10	6	23	26	2 1/2 : 1	1
28	17	14	10	10	6	29	32	2 1/2 : 1	1
36	22	14	10	10	6	35	40	2 1/2 : 1	1
43	27	14	12	12	8	46	52	2 1/2 : 1	1
50	31	12	13	21	9	53	60	2 1/2 : 1	2
58	36	12	18	26	12	63	70	2 1/2 : 1	2
66	40	12	18	32	12	73	82	2 1/2 : 1	2
72	44	12	18	37	12	83	94	2 1/2 : 1	2

\* If Table 3 End Section is used as optional, the length of pipe to be reduced by 12" for each end.



TYPICAL METAL END SECTION CONNECTIONS



STANDARD COUPLING BAND

Top Plates will be required on all Metal End Sections unless solid rock is encountered. Holes in Top Plates to be punched to match holes in Pipe End Sections. Length of Top Plates for Arch Pipe End Sections is W ± 10" for 12" to 30" dia. pipe, W ± 22" for 36" to 48" dia. pipe. Length of Top Plates for Round Pipe End Sections is W ± 10" for 12" to 27" and W ± 18" for 30" to 44".

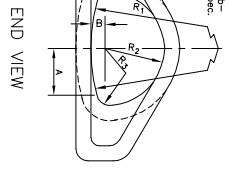
END SECTIONS FOR METAL PIPE

EA, FA

BASIS OF PAYMENT

When used as Optional End Section between Gully, Metal, Alum., Alloy & Conc., the Basis of Payment shall be: Round - EA, Arch - FA.

ARCH CONC. PIPE END SECTION



BASIS OF PAYMENT

When used as Optional End Section between Gully, Metal, Alum., Alloy & Conc., the Basis of Payment shall be: Round - EA, Arch - FA.

DIMENSIONS OF PRECAST END SECTION FOR ARCH-PIPES

SPAN	RISE	A	B	C	D	E	T	K	J	C	D	E	SLOPE
28 1/2	18	10 1/2	3 1/2	3	3	7	3 1/2	8 1/2	32	52	84	42	3:10:1
36 1/2	22 1/2	13 3/4	3 3/4	3	3	8	4	8 1/2	36	58	96	50	3:10:1
43 1/2	26 1/2	17 1/4	4 1/4	3	3	10 1/2	4 1/2	11 1/4	40	66	114	60	3:10:1
51 1/2	31 1/4	20	5 1/4	3	3	12 1/2	5 1/4	13 1/4	46	76	132	70	3:10:1
59 1/2	36	22 3/4	6 1/4	3	3	14	5 1/2	15 1/4	52	86	150	80	3:10:1
67 1/2	40	25 3/4	7 1/2	3	3	16 1/2	6 1/2	17 1/4	58	96	168	90	3:10:1

NOTE: Dimensions shown for Precast End Sections are subject to Manufacturers' tolerances.

END SECTIONS FOR CONC. PIPE

CITY OF CHICKASHA  
COMMUNITY PLANNING & DEVELOPMENT

STANDARD PREFABRICATED  
CULVERT END SECTIONS

APPROVED BY: \_\_\_\_\_ DATE: \_\_\_\_\_

ISSUED BY: \_\_\_\_\_ DATE: \_\_\_\_\_

PROJECT NO.: D-1108